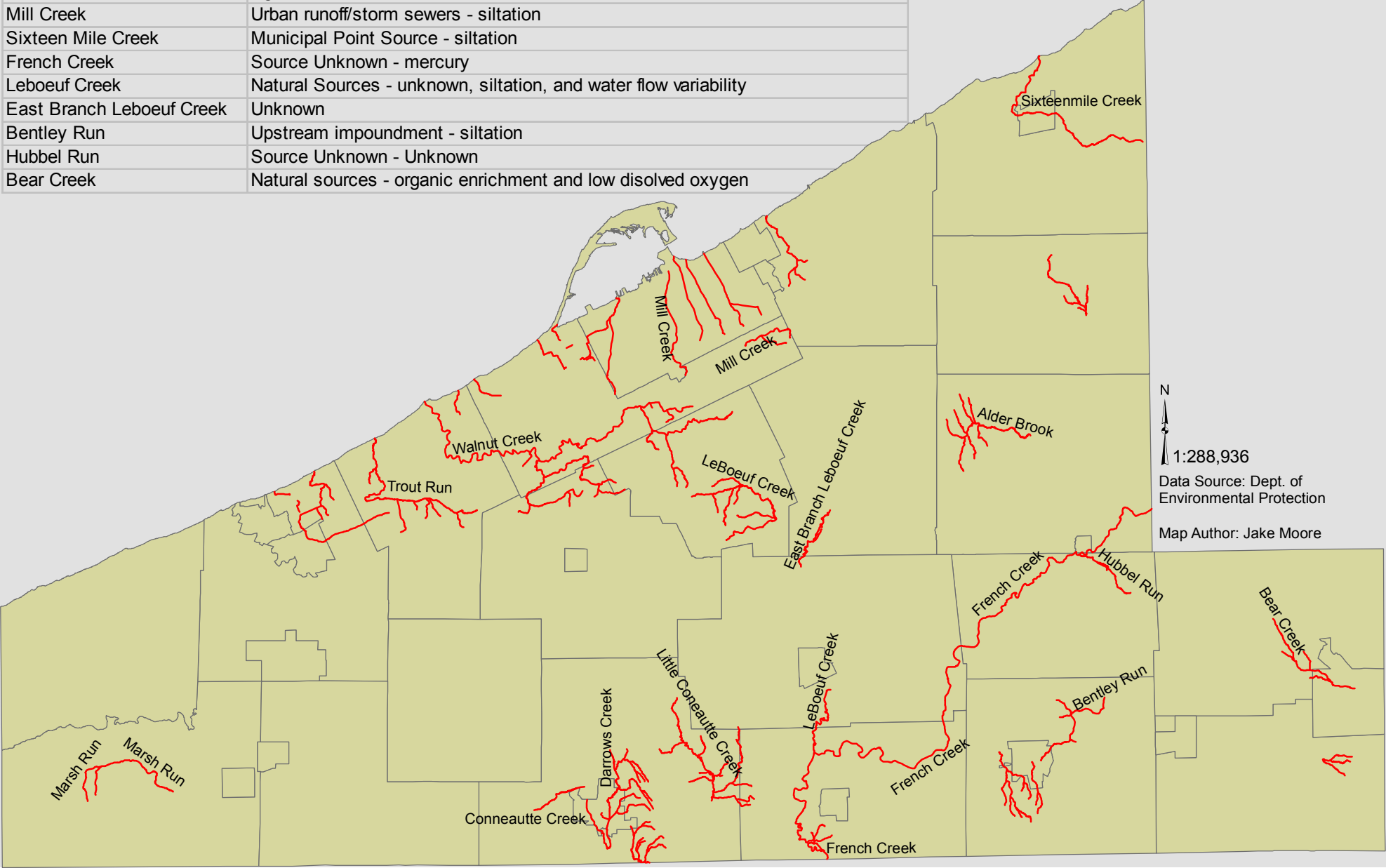


Impaired Streams: Erie County

Stream Name	Impairment
Walnut Creek	Habitat alterations, siltation, water flow variability, and urban runoff/storm sewers
Trout Run	Crop related nutrient and siltation impairments
Conneautte Creek	Agriculture, nutrients, siltation, municipal point source (chlorine)
Alder Brook	Unknown
Darrows Creek	Urban runoff and siltation
Marsh Run	Natural Sources - unknown
Little Conneautte Creek	Agriculture - siltation
Mill Creek	Urban runoff/storm sewers - siltation
Sixteen Mile Creek	Municipal Point Source - siltation
French Creek	Source Unknown - mercury
Leboeuf Creek	Natural Sources - unknown, siltation, and water flow variability
East Branch Leboeuf Creek	Unknown
Bentley Run	Upstream impoundment - siltation
Hubbel Run	Source Unknown - Unknown
Bear Creek	Natural sources - organic enrichment and low dissolved oxygen



1:288,936

Data Source: Dept. of Environmental Protection

Map Author: Jake Moore